



PAGE 2 PLAYGROUND EQUIPMENT



PAGE 3 CONCERT IN THE PARK



PAGE 4 UPCOMING EVENTS

SAVE THE DATE

SEPT. 10, OCT. 8
City Council Meetings

SEPT. 19, OCT. 17
Downtown Dev. Authority

OCT. 15
Mayor's Town Hall Meeting

SEPT. 11, OCT. 16
Lilburn Food Truck
Tuesdays 5-8 pm

SEPT. 20, 21
Women's Self Defense
Program

Learn more at cityoflilburn.com.

Wooden Boardwalk Replaced, Greenway Reopens with PermaTrak

Replacement of the 988-foot wooden boardwalk on Camp Creek Greenway finished under budget and ahead of schedule! With the structure complete and only some grading and finishing tasks remaining, the new boardwalk opened to the public on August 11.

The original deteriorating wooden boardwalk was replaced with PermaTrak, a long-lasting, pre-cast concrete. "The new Camp Creek Greenway project is the longest PermaTrak project in the country that is supported on the helical pier foundation system," PermaTrak North America President Jason Philbin said. Lilburn also has the distinction of being home to the first PermaTrak installation in the state of Georgia. That structure was installed on the greenway in September 2015.



The new boardwalk was funded by SPLOST, the one-cent sales tax approved by voters. An official ribbon cutting will take place in September.

Follow @CampCreekGreenway on Facebook to view construction photos or to learn about events taking place on the greenway.

Lilburn Daze Turns 45

Lilburn Daze celebrates its 45th year on October 13. The festival features arts and crafts vendors, games, children's activities, food, and entertainment. It's a Lilburn tradition!

The event takes place in Lilburn City Park, 9 a.m. to 5 p.m. Parking and admission are free. Shuttle transportation is provided. For more information visit lilburndaze.org.



Playground Update

New playground equipment ordered for Lilburn City Park!

The new equipment provides linear arches, webbing, interactive panels, and climbers in addition to multiple ground level activities. This equipment and the new layout will allow the city to preserve many mature shade trees surrounding the playground.

Two main structures are designed for ages 2-5 yrs and 6-12 yrs and will be located on opposite ends of the playground. Each offers age-appropriate play to test motor skills, strength, and agility. Both structures include a fast slide and multiple mental and physical challenges with climbing, balancing, and spinning opportunities.

The shaded toddler area for children up to 5 yrs, includes a central climbing structure, tunnel, bridge, ropes course,

marble panel, and a table space. The brightly colored equipment uses the same color palette as the city logo.

Artificial turf will replace the mulch ground cover used in the past. The new

turf will provide a low maintenance, softer, accessible surface under all equipment.

Follow @LilburnCityPark for more information, pictures and updates.



Bulk trash pick-up

Did you know that Advanced Disposal will pick up one bulk item per week per customer? Advanced notice is required, but City of Lilburn residents can call Advanced Disposal at (770) 381-6420 or email GreaterAtlanta@advanceddisposal.com to request this service and obtain additional information. Residents may also access the request form from the city's website. Visit www.cityoflilburn.com and select City Services at the top of the page. Click on the Utilities tab and then Garbage & Recycling.

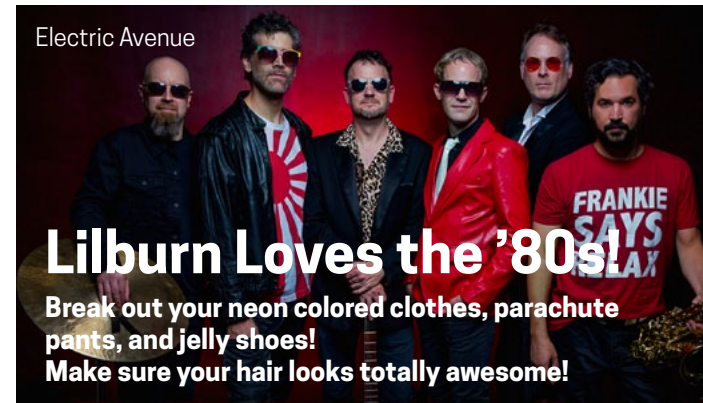
Check your recycling bin

Glass bottles/jars and plastic grocery bags are NOT accepted in curbside recycle bins. You may visit Gwinnett Clean & Beautiful at www.gwinnettcbo.org to find locations where these items are accepted. Also, please remember that items contaminated with food should not be placed in your recycle bin. Rinse your containers before placing in the bin. That greasy pizza box? Only the clean, dry portion of the box will be accepted in recycling. The remainder of the box goes in the trash. For more information, visit www.advanceddisposal.com.

Lilburn Breaks Ground for New PD HQ

The ceremonial groundbreaking for the Lilburn Police Headquarters was held on August 13, 2018. This project is expected to have a construction period of twelve months.

Pictured left to right: Council member Brian Burchik, Council member Eddie Price, Mayor Johnny Crist, Council member Tim Dunn, Council member Scott Batterton, Police Chief Bruce Hedley, City Manager Bill Johnsa, and Planning Director Doug Stacks.



Lilburn Loves the '80s!
Break out your neon colored clothes, parachute pants, and jelly shoes!
Make sure your hair looks totally awesome!

Travel back in time with **Electric Avenue**, the '80s MTV experience! They'll be playing hits from INXS, Wham!, Simple Minds, Tears for Fears, Duran Duran, and many more at Lilburn City Park on Saturday, September 8.

Food, beer, and wine will be available for purchase at the event. For more details visit cityoflilburn.com.

Parking: Walkable offsite parking will be available for the concert at the parking lots located at Killian Hill Road and Poplar Street, Main and Young Streets, and at the Lilburn City Hall-Library. Accessible parking will be available on a first-come, first-served basis at the Calvin Fitchett Municipal Complex (76 Main St.).

What to bring: Lawn chairs or blankets are recommended.

What to leave at home: No outside alcohol is allowed and coolers are subject to search. Beer and wine will be available for purchase at the event and in the Old Town Hospitality Zone on Main Street. Tents and grills are not allowed at the event. Please remember that smoking is not allowed in Lilburn City Park.

Pets: Leashed pets are welcome as long as they don't mind loud music and crowds.

Gwinnett County Water Resources

Preventing Water Pollution in Lilburn

Can you define the term, "illicit discharge?" When used in the context of stormwater management, it is the intentional or unintentional disposal of pollutants into the stormwater drainage system. Illicit discharges can significantly impair the water quality of the rivers, lakes, and streams in the city of Lilburn.

The stormwater drainage system is made up of storm drains, gutters, ditches, and even the roadways that convey stormwater to the storm drains. The purpose of the system is to prevent localized flooding by directing stormwater to the nearest body of water. Because this system has no filters, preventing illicit discharges is especially important.

Lilburn's geography is almost entirely contained within a single drainage basin, Jackson Creek. This means that when it rains, stormwater is directed by storm drains to small streams and ultimately Jackson Creek. In this way, multiple illicit discharges from all over the City combine in Jackson Creek when it rains. The individual quantity of a discharge isn't the issue; it is the combined effect of all the discharges in the drainage basin that causes water pollution.

Simply put, only stormwater should enter a storm drain. Some common illicit discharges include grass clippings, pet waste, used motor oil, and paint washing residue. None of these items are considered stormwater and all of them contribute to water pollution. To prevent water pollution in the streams and creeks in Lilburn, remember this simple rhyme: Only Rain in the Drain!

The city of Lilburn partners with the Gwinnett County Department of Water Resources to investigate stormwater pollution. If you see an illicit discharge occur, please report it at 678-376-7000.



NEW LILBURN BUSINESS LICENSES

- A Nelson Trucking**
Home based business
- Aatma**
631 Exchange Place, Suite C1
- Ada's Vanity**
733 Pleasant Hill Rd., Suite B12, C11, C13
- Another Girl's Treasure**
94 Main Street
- As Is**
5337 Lawrenceville Hwy.
- BK Siding and Construction**
Home based business
- CL Power**
4310 Lawrenceville Hwy., Suite B
- Edward Cleaning Service**
Home based business
- Estrella Del Caribe, LLC**
733 Pleasant Hill Rd., #1118
- Fine Luxury Motors**
4925 Lawrenceville Hwy., Suite A
- Ghost Weapon Systems, Inc**
75 Arcado Rd.
- Gift Store**
3907 Burns Rd., Suite 12
- Go Wireless**
4098 Lawrenceville Hwy.
- Gwinnett Parking And Services**
115 Arcado Rd.
- HUA Foods**
360 Killian Hill Rd. G-3
- La Parrillada**
733 Pleasant Hill Rd., Suite 1117
- Lifetime Dentistry**
375 Rockbridge Rd., #164
- Mavis Tire**
312 Luxomni Rd.
- Ministerio Profetico de Fe Levantando Al Caido**
4485 Lawrenceville Hwy., #107, 108
- National Security Consultants**
Home based business
- Paris Original Fragrance**
733 Pleasant Hill Rd., B08
- PianoKeys88**
Home based business
- Pupuseria Y Taqueria La Miguelena**
5319 Lawrenceville Hwy.
- Red Door Courier Express**
Home based business
- Salinas Salon & Barber, LLC**
327 Arcado Rd., Suite B
- Shukur Transport**
504 Indian Trail Lilburn Rd. Suite 201B
- Sunrise Kids Learning Center**
335 Arcado Rd.
- USA Construction Expert**
465 Beaver Ruin Rd.
- WS Painting, LLC**
Home based business
- Yummy Arreglos Frutales y Snack**
3907 Burns Rd., Suite 11

IMPORTANT NUMBERS

CITY OF LILBURN

EMERGENCY 9-1-1
 Building Inspections/Permits 770-279-3710
 Business Licenses 770-279-3708
 Code Enforcement 770-279-3710
 Court Services 770-921-2505
 Lilburn City Park/Pavilion Rental 770-921-2210
 Planning/Economic Development 770-279-3710
 Police Administration 770-921-2211
 Police Non-Emergency Response 770-513-5700
 Public Works (Streets) 770-638-2196
 cityoflilburn.com

OTHER CONTACTS

Gwinnett County Government 770-822-8000
 Animal Welfare 770-339-3200
 Fire Department 678-518-4800
 Library 770-978-5154
 Parks and Recreation 770-822-8840
 Taxes – Motor Vehicle 770-822-8818
 Taxes – Property 770-822-8800
 Water Resources 678-376-6700
 Voter Registration and Elections 678-226-7210
 Gwinnett County Public Schools 678-301-6000
 Georgia Dept. of Driver Services 678-413-8400



340 Main Street
 Lilburn, Georgia 30047

Hours: 8:30 am to 5 pm
 Monday through Friday

770-921-2210 City Hall
 770-921-2211 Police



cityoflilburn.com

Johnny Crist **Mayor** • Tim Dunn **Mayor Pro-Tem** • Brian Burchik **City Council** • S. Scott Batterton **City Council** • Eddie Price **City Council**

Join us for these upcoming events !

More info at cityoflilburn.com or 770-921-2210.



Food Truck Tuesdays

Sept. 11 and Oct. 16 in City Park.
 Live music and dinner/dessert in the park.



Lilburn Daze

Oct. 13, 9 a.m.-5 p.m.
 Food, fun, art, and entertainment.



Christmas Parade. Apply Soon!

Applications for the parade on Sat., Dec. 1,
 available Sept. 10 at cityoflilburn.com.